

School Quarantine Guidance

What to do when a student is exposed to COVID-19 but doesn't have symptoms.

Masking helps keep kids in the classroom.

If the COVID-exposed student was:

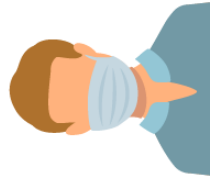
Vaccinated, regardless of masking and distancing.



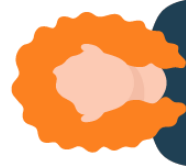
Distanced 3–6 feet and masked AND the COVID-positive student was masked.



Less than 3 feet apart and masked AND the COVID-positive student was masked.



Unmasked OR the COVID-positive student was unmasked.



Then they should:

Test on day 3, 4, or 5 and monitor symptoms for 14 days.

Monitor symptoms for 14 days.

Daily test for 7 days and monitor symptoms for 14 days.

OR

Stay home for 7 days, return after day 7 with negative test or return after day 10.

Stay home for 7 days, return after day 7 with negative test or return after day 10.